

M: Manual
Mechanic Limit + Manual

By DM45M
DM59M

DM 45M/RM Manual Tubular Motor

R: Радио приемник

- Механическая регулировка конечных положений
- Аварийный режим ручного управления



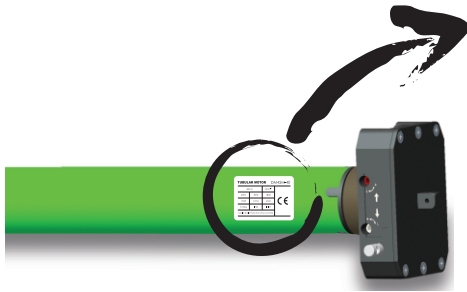
Specification

Version No. : A/01

T

Product Nameplate

Technical Support



Rated Torque	40N.m	Rated Speed	15min ⁻¹
Rated Voltage	230V	Frequency	50Hz
Rated Power	170W	Rated Current	0.77A
Motor Weight	3.16Kg	Work Time	4min
	IP44	Insulation Degree	I.c.l.H
		Protection Degree	

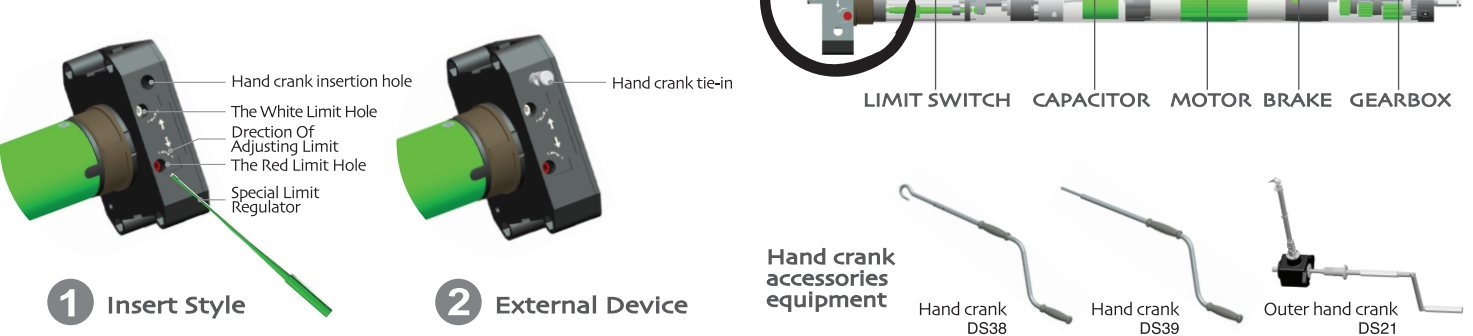
Motor Model: DM45M-40
Diameter Of The Motor Tube: Ø45
Product Certificate: CE
Tubular Single Phase Asynchronous Motor

Model Of Motor: **DM 45 M - 40 / 15**
 Tubular Motor Tube Diameter Manual Type Rated Torque (N.m) Rated Speed (rpm)

T

Instruction Of The Motor

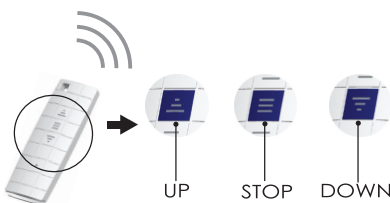
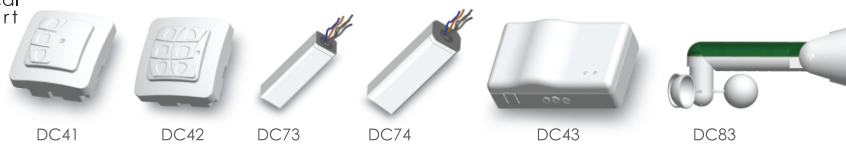
Technical Support



A

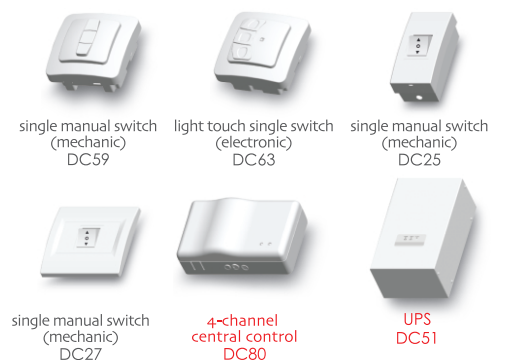
Matchable Control System

Technical Support



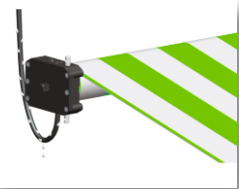
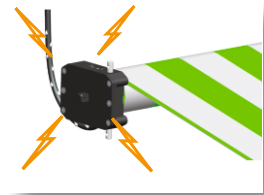
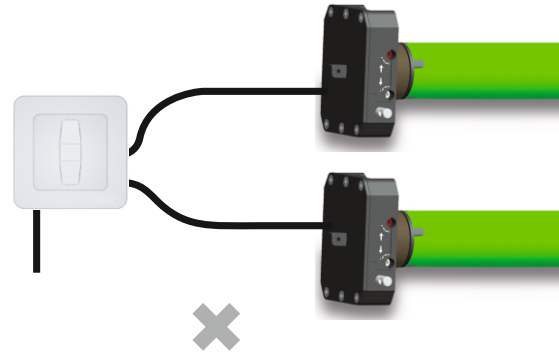
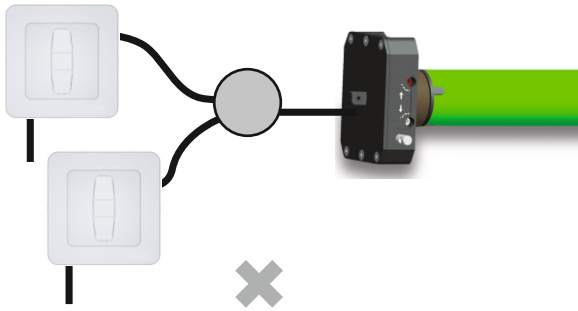
- * Emitter Frequency: 433.92MHz ± 100KHz
- * Work temperature: - 20°C ~ + 55°C
- * light-touch
- * dot-move
- * direction-converse function
- * Transmit Distance : outdoor 200 meters
indoor 35 meters

Other Control System





Attention

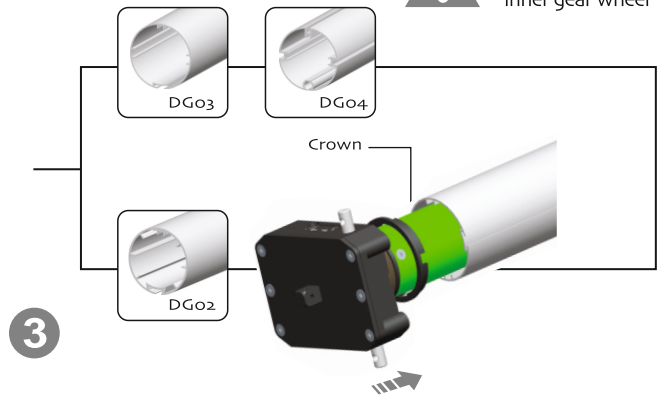
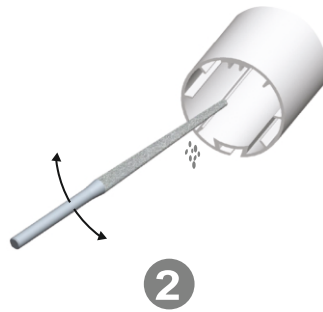


1

Crown installation

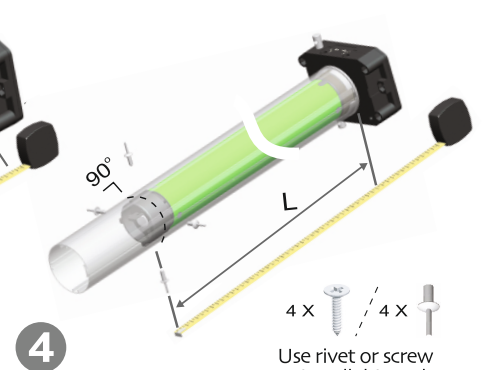
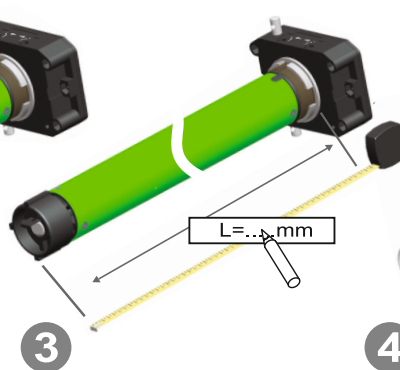
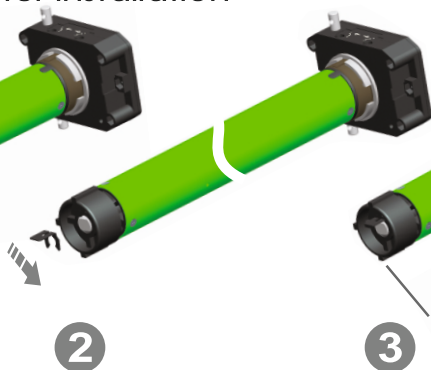


Forbidden drill through crown and inner gear wheel



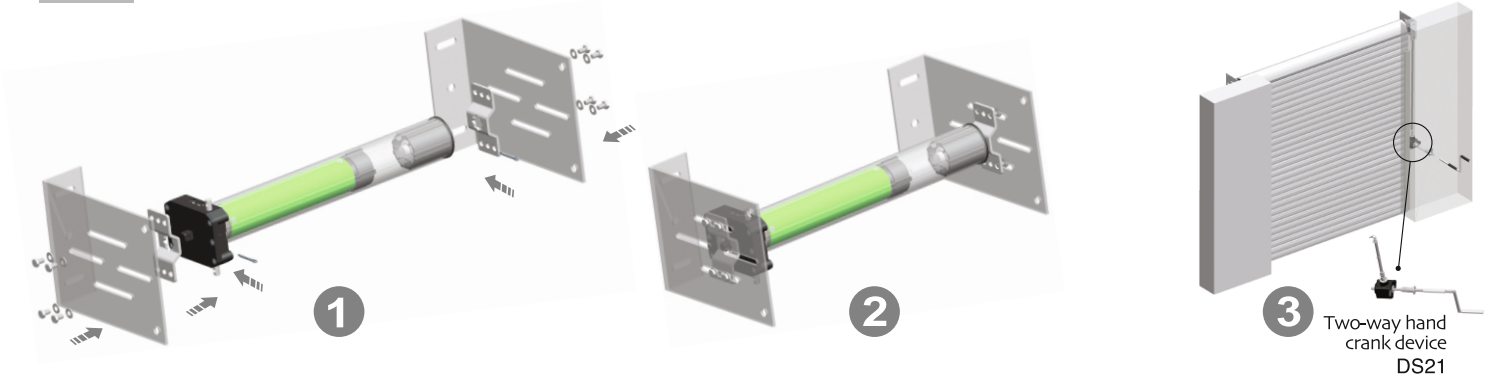
2

Drive adapter installation

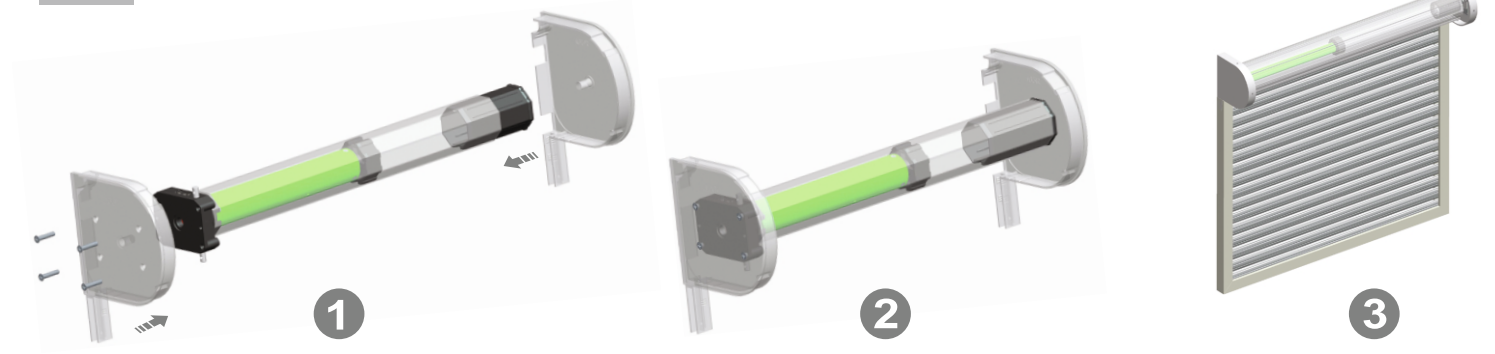


Use rivet or screw to install drive adapter

3 Bracket installation A



4 Bracket installation B



5 Circuit installation A

⚠ 230V / 50Hz or 120V / 60Hz according to product nameplate

AC

AC	L	N	⊕
	Direction	Neutral	Earth

1 Blue = Neutral
2 Black = Direction 1
3 Brown = Direction 2
⊕ Green / Yellow = Earth

1 White = Neutral
2 Red = Direction 1
3 Black = Direction 2
⊕ Green = Earth

6 Circuit installation B

⚠ 230V / 50Hz or 120V / 60Hz according to product nameplate

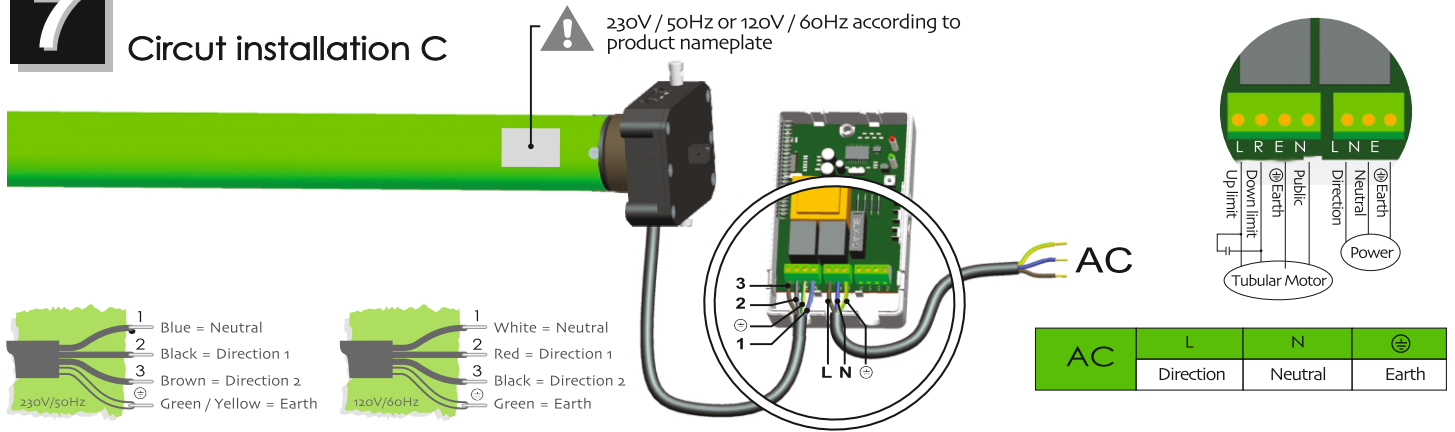
AC

AC	L	N	⊕
	Direction	Neutral	Earth

1 Blue = Neutral
2 Black = Direction 1
3 Brown = Direction 2
⊕ Green / Yellow = Earth

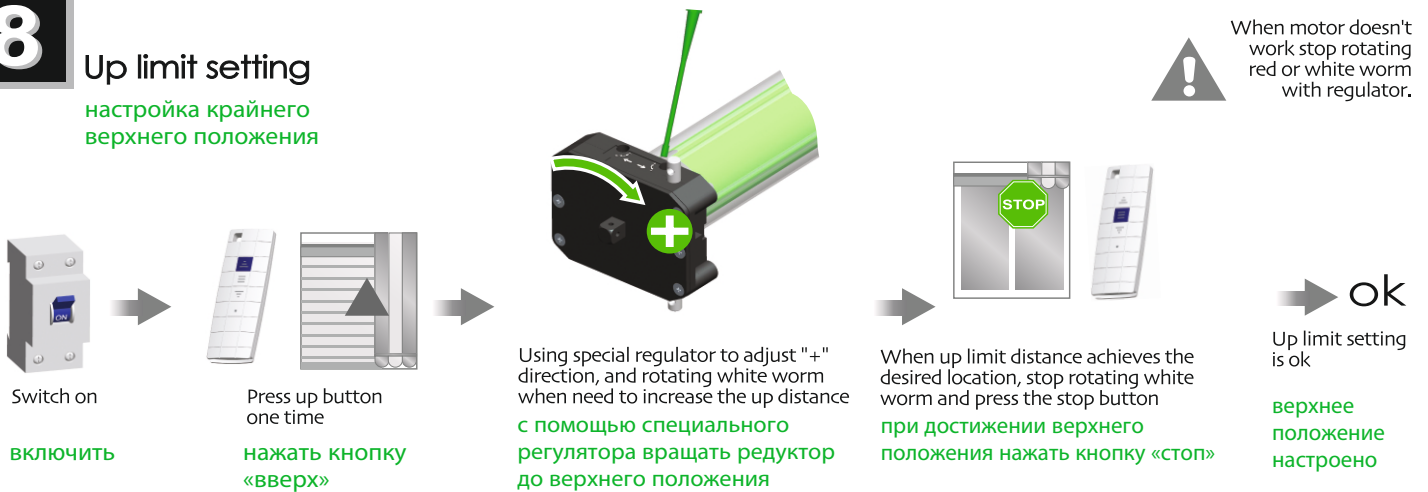
1 White = Neutral
2 Red = Direction 1
3 Black = Direction 2
⊕ Green = Earth

7 Circuit installation C



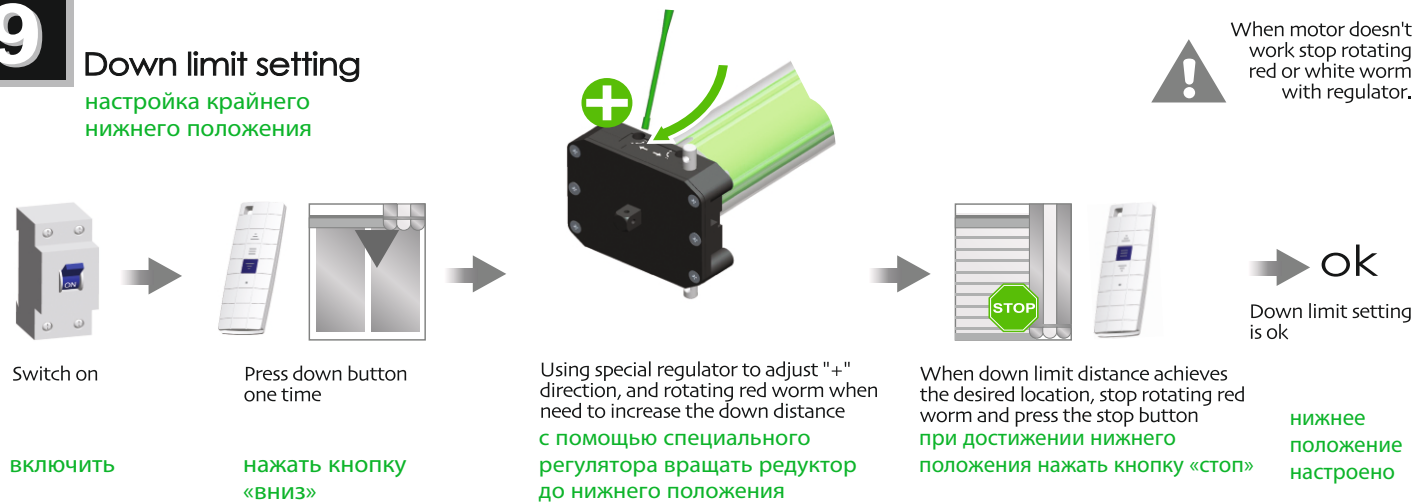
8 Up limit setting

настройка крайнего верхнего положения



9 Down limit setting

настройка крайнего нижнего положения



Common failures and solutions

Attention

	Fail-phenomena	Failure causes	solutions failure recovery
1	Press the upward button of the controller, the shutter move downward	Inside wire connecting of the controller is wrong	Exchange the position of black wire and brown wire
2	Switch on, the drive adapter runs in one-way operation	Inside limit switch of motor doesn't open	Crown running one circle in the opposite direction of the drive adapter, then it works
3	motor starts slowly or not work after connect power	a. Power voltage is slow b. Wiring error c. Overload d. Improper installation	a. Adjust power to rated data b. Check circuit and correct wiring connecting c. Rated torque associated with the installation of the load d. Re-install the motor
4	Motor stops suddenly after running	Motor stops suddenly after running	Motor will automatically resume work after 20 minutes cooling
5	Abnormal sound during roller blinds in operation	Outer tube is too long, led the rolling shutter connects with both sides of bracket too tightly	If idler is active, propering make the tube shorter to avoid too tight status.