

S: Standard
Mechanic Limit

By DM35S
DM45S
DM59S
DM35SD
DM45SD

R: Радио приемник
• Механическая регулировка конечных положений

DM 45S

Standart Tubular Motors

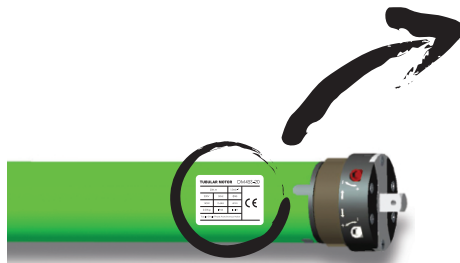


Version No. : A/04

Specification

T Product Nameplate

Technical Support



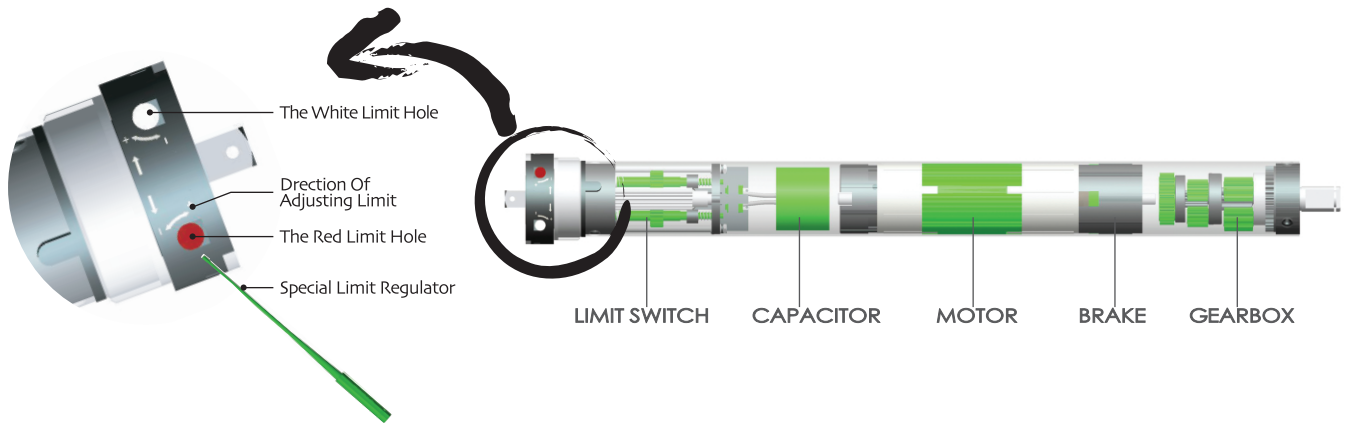
Rated Torque	20N.m	15min ⁻¹	Motor Model	DM45S-20
Rated Voltage	230V	50Hz	Rated Speed	15min ⁻¹
Rated Power	145W	0.64A	Diameter Of The Motor Tube	Ø45
Motor Weight	2.05Kg	IP44	Product Certificate	CE
		I.c.l.H	Insulation Degree	
			Protection Degree	
				Tubular Single Phase Asynchronous Motor

Model Of Motor → **DM 45 S - 20 / 15**

Tubular Motor Tube Diameter Standard Type Rated Torque (N.m) Rated Speed (rpm)

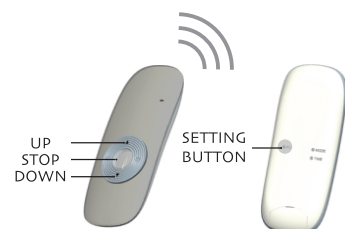
T Instruction Of The Motor

Technical Support



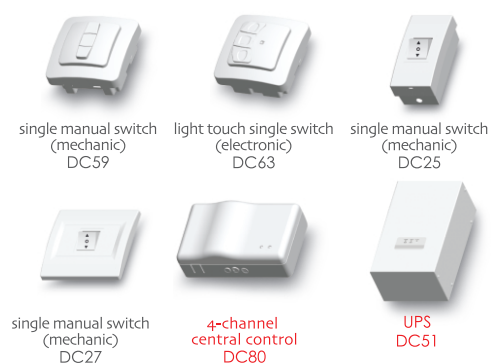
A Matchable Control System

Technical Support



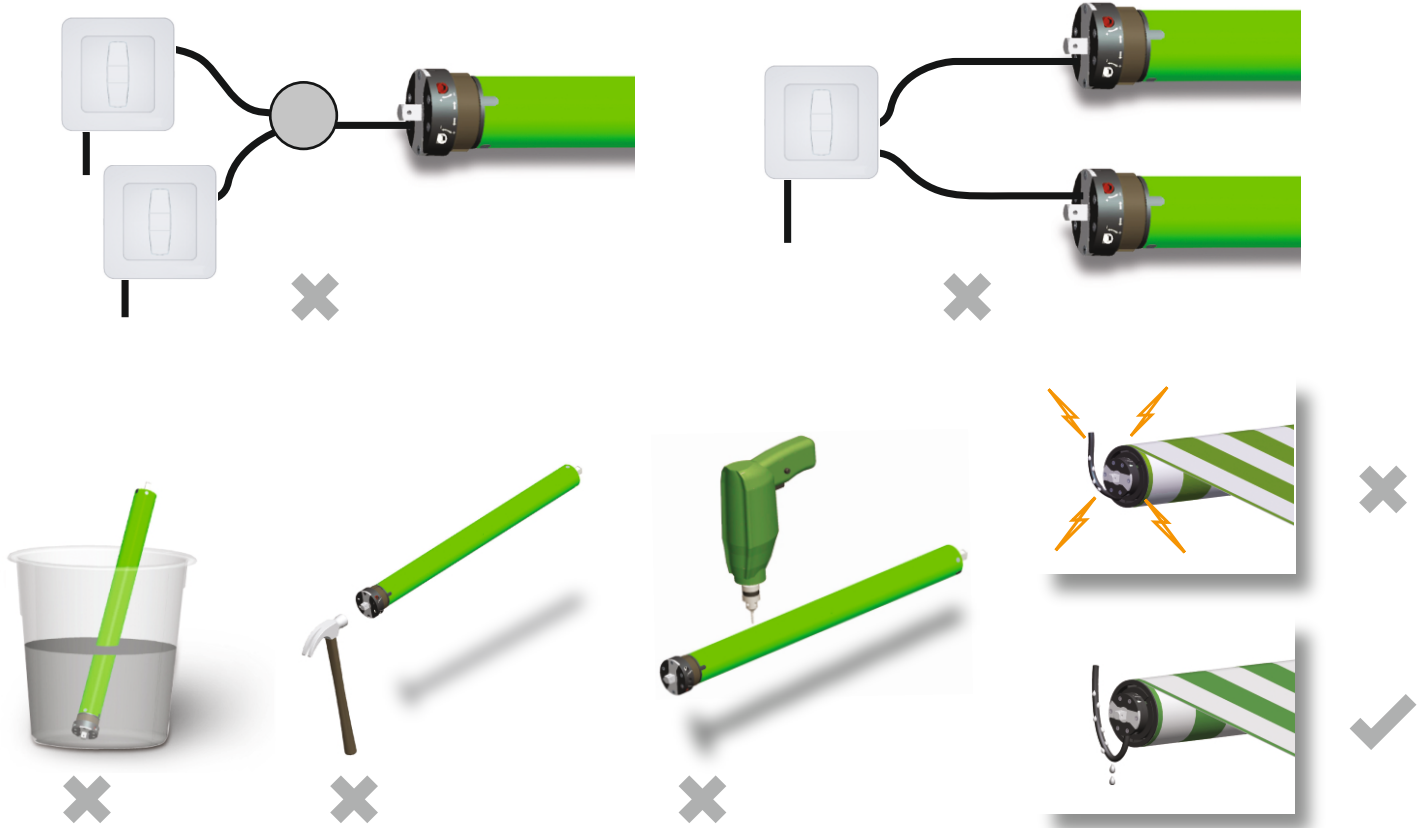
- ✦ Emitter Frequency: 433.92MHz ± 100KHz
- ✦ Work temperature: -20°C ~ +55°C
- ✦ light-touch
- ✦ dot-move
- ✦ direction-converse function
- ✦ match wireless emitters
- ✦ Transmit Distance : outdoor 200 meters indoor 35 meters

Others Control System



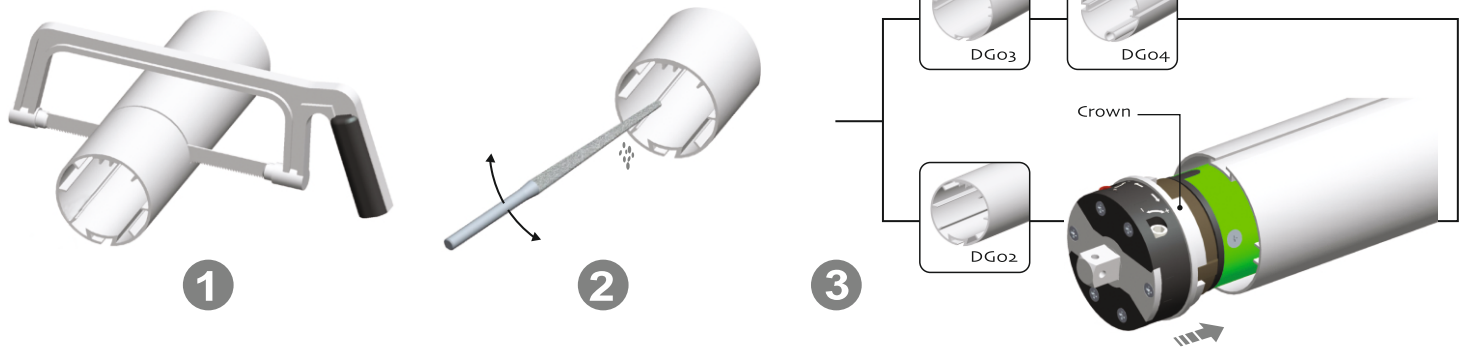


Attention



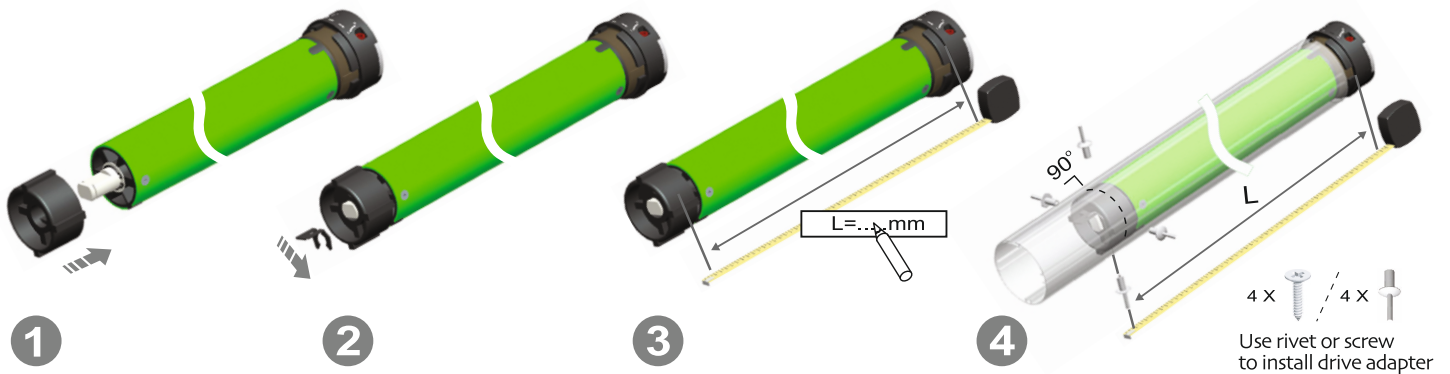
1

Crown installation



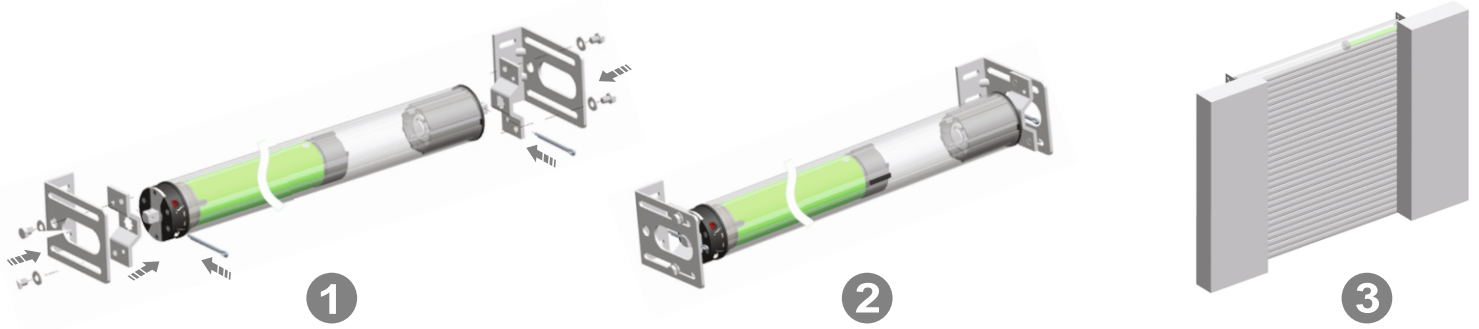
2

Drive adapter installation



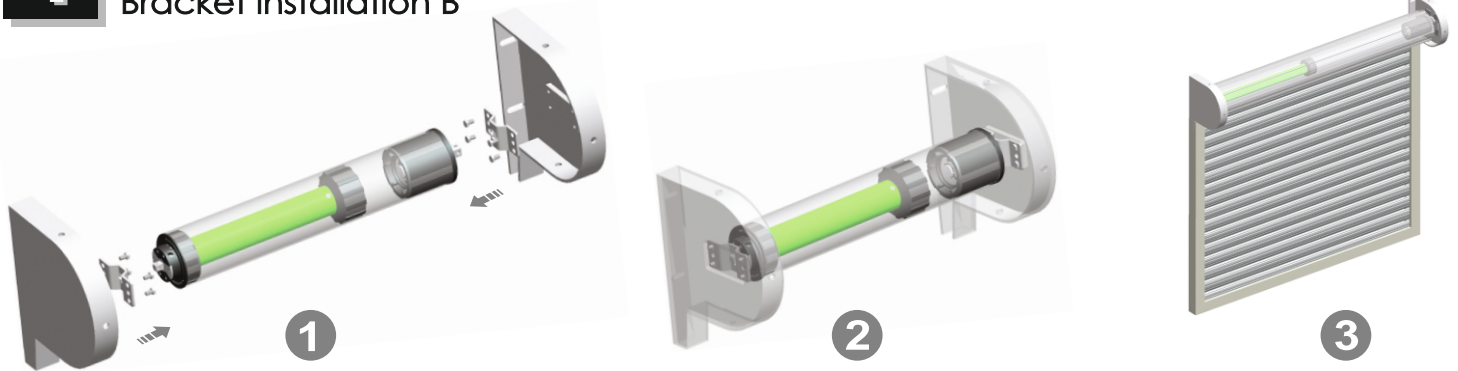
3

Bracket installation A



4

Bracket installation B



5

Circuit installation A

⚠️ 230V / 50Hz or 120V / 60Hz according to product nameplate

AC

AC	L	N	⊖
	Direction	Neutral	Earth

1 Blue = Neutral
 2 Black = Direction 1
 3 Brown = Direction 2
 ⊖ Green / Yellow = Earth

1 White = Neutral
 2 Red = Direction 1
 3 Black = Direction 2
 ⊖ Green = Earth

6

Circuit installation B

⚠️ 230V / 50Hz or 120V / 60Hz according to product nameplate

AC

AC	L	N	⊖
	Direction	Neutral	Earth

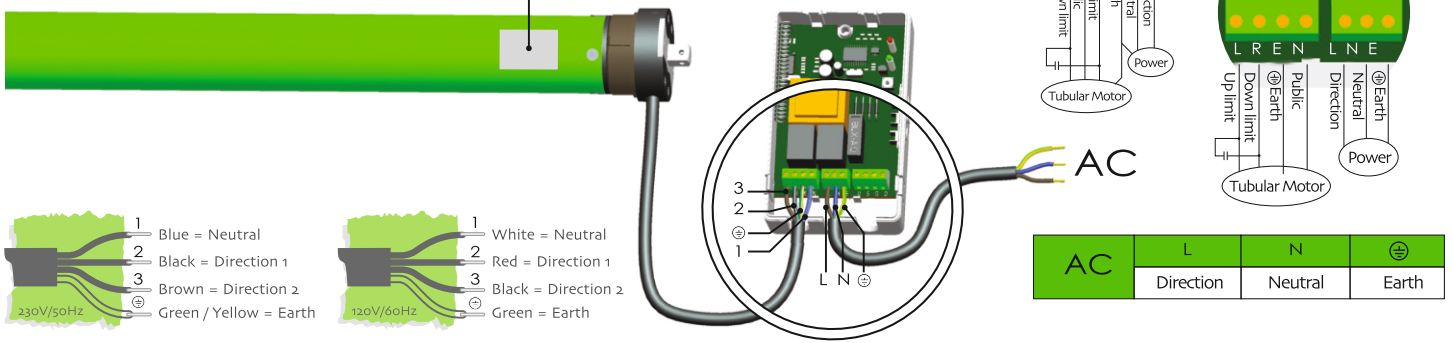
1 Blue = Neutral
 2 Black = Direction 1
 3 Brown = Direction 2
 ⊖ Green / Yellow = Earth

1 White = Neutral
 2 Red = Direction 1
 3 Black = Direction 2
 ⊖ Green = Earth

7

Circuit installation C

⚠ 230V / 50Hz or 120V / 60Hz according to product nameplate



8

Up limit setting

настройка верхнего предела

⚠ If you use external receiver, the motor is controlled by emitter; If you use external switch, the motor is controlled by switch; When motor stops, do not rotate the white limit hole!



9

Down limit setting

настройка нижнего предела

⚠ If you use external receiver, the motor is controlled by emitter; If you use external switch, the motor is controlled by switch; When motor stops, do not rotate the red limit hole!



Attention

Common failures and solutions

	Fail-phenomena	Failure causes	solutions failure recovery
1	Press the upward button of the controller, the shutter move downward	Inside wire connecting of the controller is wrong	Exchange the position of black wire and brown wire
2	Switch on, the drive adapter runs in one-way operation	Inside limit switch of motor doesn't open	Crown running one circle in the opposite direction of the drive adapter, then it works
3	motor starts slowly or not work after connect power	a. Power voltage is slow b. Wiring error c. Overload d. Improper installation	a. Adjust power to rated data b. Check circuit and correct wiring connecting c. Rated torque associated with the installation of the load d. Re-install the motor
4	Motor stops suddenly after running	Motor stops suddenly after running	Motor will automatically resume work after 20 minutes cooling
5	Abnormal sound during roller blinds in operation	Outer tube is too long, led the rolling shutter connects with both sides of bracket too tightly	If idler is active, propering make the tube shorter to avoid too tight status.